

COVID-19 Vaccine Is Effective in Inflammatory Bowel Disease Patients and Is Not Associated With Disease Exacerbation



Raffi Lev-Tzion,^{*} Gili Focht,^{*,‡} Rona Lujan,^{*} Adi Mendelovici,^{*} Chagit Friss,^{*} Shira Greenfeld,[§] Revital Kariv,[§] Amir Ben-Tov,^{§,||} Eran Matz,[¶] Daniel Nevo,[#] Yuval Barak-Corren,^{**} Iris Dotan,^{‡‡} and Dan Turner^{*,‡}

^{*}Juliet Keidan Institute of Pediatric Gastroenterology Hepatology and Nutrition, Shaare Zedek Medical Center, Jerusalem, Israel; [‡]Hebrew University of Jerusalem, Jerusalem, Israel; [§]Maccabi Health Services and Sackler Faculty of Medicine, Tel Aviv University, Tel-Aviv, Israel; ^{||}Dana-Dwek Children's Hospital, Tel-Aviv Sourasky Medical Center, Tel-Aviv, Israel; [¶]Leumit Health Services, Tel-Aviv, Israel; [#]Department of Statistics and Operations Research, Tel Aviv University, Tel-Aviv, Israel; ^{**}Predictive Medicine Group, Computational Health Informatics Program, Boston Children's Hospital, Boston, Massachusetts; and ^{‡‡}Division of Gastroenterology, Rabin Medical Center, Petah Tikva, Israel, and Sackler Faculty of Medicine, Tel Aviv University, Tel-Aviv, Israel

BACKGROUND & AIMS: Studies have shown decreased response to coronavirus disease 2019 (COVID-19) vaccinations in some populations. In addition, it is possible that vaccine-triggered immune activation could trigger immune dysregulation and thus exacerbate inflammatory bowel diseases (IBD). In this population-based study we used the epi-Israeli IBD Research Nucleus validated cohort to explore the effectiveness of COVID-19 vaccination in IBD and to assess its effect on disease outcomes.

METHODS: We included all IBD patients insured in 2 of the 4 Israeli health maintenance organizations, covering 35% of the population. Patients receiving 2 Pfizer-BioNTech BNT162b2 vaccine doses between December 2020 and June 2021 were individually matched to non-IBD controls. To assess IBD outcomes, we matched vaccinated to unvaccinated IBD patients, and response was analyzed per medical treatment.

RESULTS: In total, 12,109 IBD patients received 2 vaccine doses, of whom 4946 were matched to non-IBD controls (mean age, 51 ± 16 years; median follow-up, 22 weeks; interquartile range, 4–24). Fifteen patients in each group (0.3%) developed COVID-19 after vaccination (odds ratio, 1; 95% confidence interval, 0.49–2.05; $P = 1.0$). Patients on tumor necrosis factor (TNF) inhibitors and/or corticosteroids did not have a higher incidence of infection. To explore IBD outcomes, 707 vaccinated IBD patients were compared with unvaccinated IBD patients by stringent matching (median follow-up, 14 weeks; interquartile range, 2.3–20.4). The risk of exacerbation was 29% in the vaccinated patients compared with 26% in unvaccinated patients ($P = .3$).

CONCLUSIONS: COVID-19 vaccine effectiveness in IBD patients is comparable with that in non-IBD controls and is not influenced by treatment with TNF inhibitors or corticosteroids. The IBD exacerbation rate did not differ between vaccinated and unvaccinated patients.

Keywords: SARS-CoV-2; Vaccination; Crohn's Disease; Ulcerative Colitis.

Abbreviations used in this paper: CD, Crohn's disease; CI, confidence interval; COVID-19, coronavirus disease 2019; epi-IIRN, epi-Israeli IBD Research Nucleus; HMO, health maintenance organization; IBD, inflammatory bowel disease; IQR, interquartile range; OR, odds ratio; PCR, polymerase chain reaction; SARS-CoV-2, severe acute respiratory syndrome coronavirus-2; SMD, standardized mean difference; TNF, tumor necrosis factor; UC, ulcerative colitis.



© 2022 by the AGA Institute
1542-3565/\$36.00

<https://doi.org/10.1016/j.cgh.2021.12.026>

Severe acute respiratory syndrome coronavirus-2 (SARS-CoV-2) virus has caused more than 200 million confirmed cases of coronavirus disease 2019 (COVID-19) globally as of mid-2021 and more than 4.3 million deaths.¹ Mass vaccination is the most effective strategy for managing the pandemic. Various factors may interfere with host response to vaccination and potentially compromise vaccine effectiveness, including advanced age² and various types of immune suppression such as immunosuppressive medications.³ Indeed, decreased seroconversion rates to vaccines other than COVID-19 have been demonstrated in inflammatory bowel disease (IBD) patients treated with tumor necrosis factor (TNF) inhibitors.^{4–6} Recent reports have suggested impaired serologic response to COVID-19 infection in patients treated with TNF inhibitors and immunomodulators⁷; serologic response to vaccination has also been found to be impaired.^{8,9} However, because most of these patients do seroconvert,^{10,11} it is unclear whether this translates into higher infection rates.^{8,12,13} Accordingly, concerns have been expressed as to whether the new COVID-19 vaccines are as effective in IBD patients, especially in those treated with immunosuppressive medications. One real-world study from Israel¹⁴ and one prospective cohort study⁹ have suggested similar effectiveness of the COVID-19 vaccine as in non-IBD subjects, but follow-up in these studies was short.

An additional concern is that immune activation due to COVID-19 vaccination would trigger IBD exacerbation. It is theoretically plausible that the immune activation initiated by COVID-19 vaccination might trigger IBD exacerbations through an immune-mediated dysregulation of the mucosal immune system. The effect of COVID-19 vaccination on IBD activity has only been assessed thus far for short follow-up periods (up to 4 weeks).^{9,12} For routinely administered vaccines other than COVID-19, no vaccine has yet been demonstrated to cause IBD flares, but there are no controlled studies specifically exploring their effect on disease outcomes in IBD.

In the present population-based controlled study, we aimed to explore both the effectiveness of COVID-19 vaccination in preventing SARS-CoV-2 infection, specifically in patients treated with TNF inhibitors and corticosteroids, and its effect on IBD course.

Methods

For this study, we used the administrative database of the validated Israeli IBD Research Nucleus (epi-IIRN) cohort. The epi-IIRN includes all IBD patients in Israel, identified by validated case ascertainment algorithms, with 3 non-IBD controls (identified by the algorithms as not having IBD) matched to each patient on the basis of age, sex, jurisdiction, and health maintenance organization (HMO). The previously published development and validation process of the case ascertainment algorithms to identify patients with IBD within the HMOs showed

What You Need to Know

Background

Although Pfizer COVID-19 vaccine is extremely effective at preventing infection, questions have arisen regarding its effectiveness in inflammatory bowel disease (IBD) patients on immunosuppressive medications. In addition, its effect on IBD outcomes has not been assessed.

Findings

In a large population-based study, Pfizer COVID-19 vaccine was equally effective at preventing infection in IBD patients, including those on immunosuppressive medication, as in non-IBD subjects. Vaccinated IBD patients had no more disease exacerbations after vaccination than unvaccinated IBD patients.

Implications for patient care

The study demonstrates that the Pfizer COVID-19 vaccine provided excellent protection for IBD patients on immunosuppression for as long as 22 weeks, and that no worsening of IBD outcomes occurred after vaccination.

high accuracy (99% specificity, 89% sensitivity, 92% positive predictive value, and 99% negative predictive value).^{15,16}

We included subjects from 2 of the 4 national HMOs, covering 35% of the Israeli population. The HMOs are fully computerized and maintain electronic records on all health contacts, diagnoses (International Classification of Diseases, Ninth Revision), medications, laboratory test results, and utilization of other ambulatory health services, linked online to a central server since 2000–2003 (depending on the HMO). Medication data are accurate because the Israeli health care system provides the drugs via the HMOs while covering their costs. SARS-CoV-2 polymerase chain reaction (PCR) data are extremely accurate, because PCR results in Israel have been universally recorded in the HMO electronic health records since the start of the pandemic. During the COVID-19 pandemic, the Israeli Ministry of Health required central online daily registration of COVID-19 vaccination and SARS-CoV-2 PCR results, enabling highly accurate assessment of vaccination impact.¹⁷

On December 11, 2020, the U.S. Food and Drug Administration issued an emergency use authorization for the Pfizer-BioNTech BNT162b2 COVID-19 vaccine. The vaccination program began in Israel toward the end of December 2020, and by June 2021, 56% of Israeli residents had received 2 vaccine doses.¹⁷ The follow-up period for the present study was thus from December 1, 2020 to June 30, 2021. During this period, the only available vaccine in Israel was the Pfizer-BioNTech BNT162b2 vaccine. The unparalleled rapidity of the

Israeli vaccination campaign and use of only one vaccine brand, alongside the epi-IIRN validated national longitudinal IBD database, offer a unique opportunity to explore the effects of vaccination on a large IBD population-based cohort with exact matching.

A portion of our data was included in the previous study by Ben-Tov et al¹⁴ on vaccine effectiveness in IBD patients. Here, we added a second HMO, used more stringent matching, lengthened the follow-up period, and, most importantly, explored the novel question of whether the vaccine influences IBD activity.

COVID-19 Vaccine Effectiveness

For this analysis, we excluded subjects who had confirmed SARS-CoV-2 infection or positive serology at any time before the second vaccine and those who had received only 1 vaccine dose. Each vaccinated IBD patient was individually matched to a vaccinated non-IBD subject by using the following variables: year of birth, sex, jurisdiction of residence, HMO, and dates of the first vaccination with a caliper of ± 3 days.

A biased higher or lower response to vaccination may be a result of a different background infection rate between individuals with and without IBD. To explore this potential bias, we individually matched each unvaccinated IBD patient to a non-IBD unvaccinated control by year of birth, sex, jurisdiction of residence, and HMO. Comorbidities that according to the U.S. Centers for Disease Control and Prevention may impact COVID-19 severity (Appendix 1) were compared between the matched groups to ensure balanced distribution.

To assess the influence of immunosuppressive medications on vaccine effectiveness, we performed a sub-analysis using propensity score matching to compare the SARS-CoV-2 infection rate among IBD patients treated with TNF inhibitors alone (infliximab, adalimumab, golimumab, certolizumab pegol), systemic corticosteroids alone, or combined TNF inhibitors and steroids at the time of vaccination with (1) all other IBD patients and with (2) patients treated with other biologics or small molecules (vedolizumab, ustekinumab, tofacitinib). To calculate propensity scores for both comparisons, a logistic regression model was applied, and matching was performed using the nearest neighbor with a caliper of .1. Variables included in the propensity score model were IBD subtype (Crohn's disease [CD]/ulcerative colitis [UC]), age at diagnosis, year of birth, sex, preexisting conditions score, HMO, jurisdiction of residence, and time of the first and second vaccines (with a caliper of ± 3 days). As an additional exact matching variable designed to correct for disease severity, we formed severity subgroups through hierarchical clustering machine-learning methods based on the patients' blood work (hemoglobin, C-reactive protein, erythrocyte sedimentation rate, albumin, platelets, white blood cell count) performed during the preceding year

(Supplementary Table 1, Appendix 3). These subgroups categorize patients with heterogeneous available data to assist in accounting for disease severity.

Inflammatory Bowel Disease Activity After Vaccination

To explore the impact of vaccination on IBD disease course, we matched vaccinated (2 doses) to unvaccinated IBD patients by sex, jurisdiction of residence, IBD type (CD or UC), disease severity clusters based on blood work (as defined above), number of disease flares during the preceding 2 years (defined as any event of medication escalation, all-cause hospitalization, or steroid use), and age at IBD diagnosis (with a caliper of ± 1 year) (Supplementary Table 1, Appendix 2). We excluded subjects who had confirmed SARS-CoV-2 infection or positive serology at any time before the second vaccine and, in matched controls, before the vaccinated date of the matched patient.

To further reduce the possibility of a confounding effect stemming from disease severity, the interval from the most recent flare to the first vaccine was used as an additional matching variable. The duration of follow-up of each IBD vaccinated-IBD unvaccinated pair was from the date of the second vaccination of the case until the earliest of the following: vaccination date of the unvaccinated individual, SARS-CoV-2 positivity of any one of the pair, death, or June 30, 2021. In the event that a control was vaccinated, he/she was converted to a case and was rematched accordingly.

The outcome of IBD exacerbation was defined as treatment escalation, commencement of corticosteroids or enema, or hospitalization (Appendix 2). In addition, a sensitivity analysis was performed using a narrow definition of commencement of corticosteroids only.

Statistics

Variables are presented as mean \pm standard deviation or median (interquartile range [IQR]) for continuous and categorical variables, respectively. Comparisons between groups were made by Student *t* test, Wilcoxon rank-sum test, one-way analysis of variance, and χ^2 , as appropriate. Because of the large sample size, *P* values are presented along with standardized mean differences (SMDs), in which a SMD greater than 0.1 was considered meaningful. Odds ratios (ORs) were calculated using the Haldane-Anscombe correction to express the association between the exposure (eg, IBD patients vs non-IBD patients) and the outcome (eg, positive PCR test). Times to positive SARS-CoV-2 PCR test and to IBD flares are presented using Kaplan-Meier survival curves and compared using the log-rank test with robust variance estimator¹⁸ to account for the individual matching. Analyses were performed using R; *P* < .05 was considered

significant. The study was approved by the local ethics committee.

Results

COVID-19 Vaccine Effectiveness

Between December 1, 2020 and June 30, 2021, 12,109 IBD patients and 31,427 non-IBD controls without previous recorded SARS-CoV-2 infection received 2 vaccine doses (Figure 1, Supplementary Table 3). The cohort included 4946 pairs, matched for year of birth, sex, jurisdiction of residence, HMO, and vaccination dates. The groups were well-balanced, with SMD <0.1 for all demographic and disease characteristic variables (Table 1, Supplementary Figure 1). The post-vaccination SARS-CoV-2 infection rate was identical between vaccinated IBD patients (15/4946, 0.3%) and vaccinated non-IBD controls (15/4946, 0.3%; OR, 1; 95% confidence interval [CI], 0.49–2.05; $P = 1.0$) (Figure 2). Similarly, time to positive SARS-CoV-2 PCR showed no difference between the groups (Supplementary Figure 2).

Effect of Medical Therapy on Vaccine Effectiveness

Of the 536 vaccinated IBD patients receiving TNF inhibitors and/or corticosteroids at the time of vaccination, 2 (0.4%) had a positive SARS-CoV-2 PCR during the study period, compared with 36/11,573 (0.3%) vaccinated IBD patients who did not receive these medications ($P = 1.0$). Propensity score matching was successful for 502 pairs and showed similar infection rates (2/502, 0.4% for TNF inhibitors/steroids vs 0/502 for all others; $P = .48$; Figure 2).

To further reduce confounding, we compared patients on TNF inhibitors/corticosteroids with patients on any biologics other than TNF inhibitors to capture a group with likely greater disease severity, with similar results (2/536, 0.4% for TNF inhibitors/steroids vs 0/189 for all other biologics; $P = .97$; Figure 2). Finally, the latter groups were compared by propensity score after more stringent matching by a variety of IBD and demographic variables, including exact matching of IBD severity (Supplementary Figure 3). The matched analysis compared 125 patients in each group; no patients from either group tested positive for SARS-CoV-2 (Figure 2).

Background SARS-CoV-2 Infection Rates in Unvaccinated Inflammatory Bowel Disease Patients and Unvaccinated Non-Inflammatory Bowel Disease Controls

We considered the possibility that IBD patients may have exercised greater caution in their attempts to avoid exposure to SARS-CoV-2, thus decreasing the background infection rate compared with non-IBD subjects and

confounding the estimate of vaccine effectiveness. Therefore, we determined the SARS-CoV-2 infection rate during the study period among 4694 unvaccinated IBD patients matched to 4694 unvaccinated non-IBD controls. Infection rates were slightly higher in the unvaccinated IBD patients (461/4694, 9.8%) than in the matched unvaccinated non-IBD individuals (362/4694, 7.7%; OR, 1.3; 95% CI, 1.13–1.51; $P = .0003$). The observed difference was in the opposite direction from the hypothesis, and thus it does not confound the conclusion that the vaccine is at least as effective in the IBD population as in non-IBD controls.

Effect of Vaccination on IBD Disease Activity

For this analysis, 2108 vaccinated IBD patients were matched to unvaccinated IBD patients by sex, jurisdiction of residence, IBD type (CD or UC), and disease severity according to blood work clusters. Median follow-up was 12 weeks (IQR, 2.4–20.6). No difference in disease outcome was seen during the first 40 days after the second vaccination, but thereafter, time to flare was shorter in vaccinated compared with unvaccinated IBD patients (Supplementary Figure 4). Overall, 44% of vaccinated and 34% of unvaccinated patients experienced an exacerbation or treatment escalation ($P < .0001$; number needed to harm = 10).

Considering the possibility that despite the comprehensive matching the model was still unable to fully account for baseline disease severity, we applied more stringent matching criteria including number of exacerbations during the previous 2 years and time interval from the last exacerbation (defined as in the outcome). This cohort included 707 pairs of vaccinated and unvaccinated IBD patients with similar baseline characteristics (Table 2) and a median follow-up of 14 weeks (IQR, 2.3–20.4). No substantive difference in disease outcomes was found between the groups (Figure 3); the overall risk of exacerbation was 29% in vaccinated patients and 26% in unvaccinated patients ($P = .3$).

Finally, in light of the relatively high exacerbation rate, we performed a sensitivity analysis on the same cohort using a narrow definition of commencement of corticosteroids only. Here too, no difference was found between the groups (Figure 4); the overall risk of exacerbation was 1.4% in vaccinated patients and 2.1% in unvaccinated patients ($P = .3$).

Discussion

In this population-based study of all patients from 2 of the 4 national HMOs in Israel, we found that the overall COVID-19 vaccine effectiveness was similar between IBD patients and matched non-IBD controls. Focusing on medical therapy, we found that patients on TNF inhibitors and/or corticosteroids did not have a higher SARS-CoV-2 infection rate, even after precise

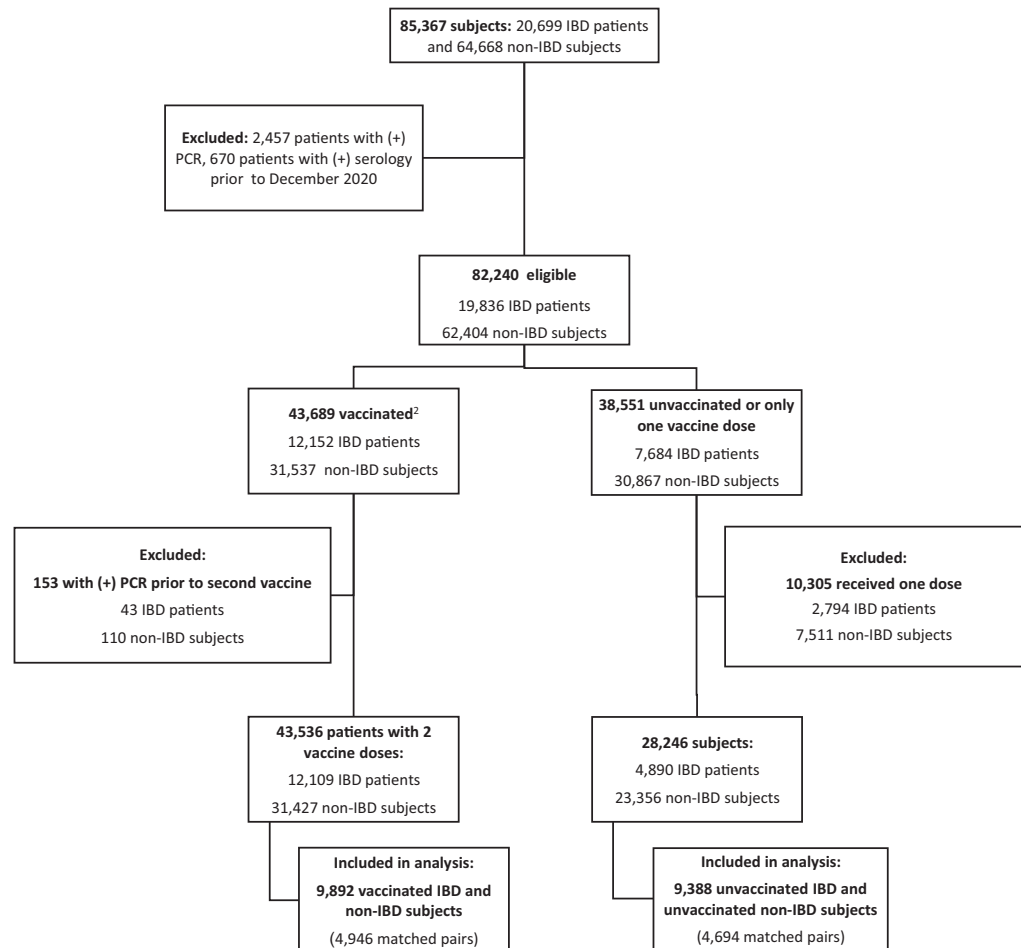


Figure 1. Included patients from the epi-IIRN cohort. ¹Non-IBD controls were matched by age, sex, HMO, and jurisdiction of residence. ²Included individuals were vaccinated with 2 doses of Pfizer-BioNTech BNT126b2 from December 2020 to June 2021.

matching for demographics, underlying diseases, and IBD severity.

Our initial comparison revealed that vaccination was associated with increased risk of IBD exacerbation from 40 days onward, despite exact matching of demographics, laboratory markers of disease severity, and number of exacerbations in the preceding 2 years. However, when we included in the analysis the recency of the last exacerbation before baseline, the difference was attenuated and was no longer significant. This underscores the challenge of accounting for disease severity in administrative databases and the importance of stringent matching of disease severity when assessing the influence of an exposure on disease course.

The effect of COVID-19 vaccination on short-term (4 weeks) IBD course was assessed by 2 groups, who reported no clinical and laboratory exacerbation compared with pre-vaccination baseline in a prospective cohort of 185 patients with IBD stratified according to treatment⁹ and no increase in corticosteroid prescription 1 month after vaccination in a large retrospective cohort compared with a matched unvaccinated cohort.¹² However, accurate capture of IBD exacerbation in a retrospective study is challenging. Furthermore, ruling out an effect of vaccination on IBD activity likely requires more than a month of follow-up. Our data enabled a more

comprehensive definition of exacerbation, including hospitalizations, treatment escalation, and commencement of corticosteroid or enema. The broad definition and the longer follow-up period (median, 14 weeks) enabled improved capture of IBD exacerbation. To address the possibility that our broad definition could have potentially overdiagnosed exacerbation, we performed a sensitivity analysis defining exacerbation as steroid commencement only and still found no difference between the groups.

The finding that TNF inhibitors did not affect vaccine efficacy requires further discussion in light of existing literature showing decreased serologic response in patients on TNF inhibitors for various vaccines including hepatitis A,⁴ hepatitis B,⁵ and influenza⁶ vaccines.

Regarding response to COVID-19 vaccination in TNF inhibitor-treated patients, data are conflicting. Dailey et al¹⁹ found a robust response to 2 vaccine doses in a small prospective cohort, and all 33 vaccinated IBD patients in the study seroconverted. Khan et al²⁰ found that BNT162b2 and Moderna mRNA-1273 vaccines were effective in a large retrospective cohort of IBD patients, irrespective of medications, but follow-up was brief, and the study did not include non-IBD controls. In contrast, in a large retrospective study (CLARITY IBD), Kennedy et al⁸ found lower antibody levels in infliximab-treated

Table 1. Basic Characteristics of Vaccinated Patients With and Without IBD in the Matched Cohort

	Non-IBD (n = 4946)	IBD (n = 4946)	P value	SMD
Age (y)	51 ± 16	51 ± 16	1	<0.001
<18	20 (0.4%)	20 (0.4%)		
18–39	1288 (26%)	1288 (26%)		
40–59	2047 (41%)	2047 (41%)		
60–69	823 (17%)	823 (17%)		
70–79	627 (13%)	627 (13%)		
80+	141 (3%)	141 (3%)		
Sex, male	2412 (49%)	2412 (49%)	1	<0.001
Duration of follow-up after second vaccine (weeks)	22 (4–24)	22 (4–24)	1	<0.001
IBD type				
CD	—	2447 (49%)	—	—
UC	—	2499 (51%)	—	—
Disease duration (y)	—	12 (1–24)	—	—
Treatment during the preceding year				
Mesalamine	—	1441 (29%)	<.001	0.91
Corticosteroid	—	203 (4%)	<.001	0.29
Immunomodulator	—	294 (6%)	<.001	0.36
Anti-TNF	—	487 (10%)	<.001	0.47
Vedolizumab	—	185 (4%)	<.001	0.28
Ustekinumab	—	96 (2%)	<.001	0.2
Tofacitinib	—	28 (1%)	<.001	0.11
IBD hospitalization ever	—	2329 (47%)	<.001	1.33
IBD surgery ever	—	668 (14%)	<.001	0.56
Corticosteroids therapy ever	—	2722 (55%)	<.001	1.57
Preexisting conditions score ^a			.011	0.073
0	2099 (42%)	2001 (41%)		
1	1388 (28%)	1352 (27%)		
2	696 (14%)	736 (15%)		
3	396 (8%)	404 (8%)		
≥4	367 (7%)	453 (9%)		

NOTE. Count (%), mean ± standard deviation, or medians (IQR) are presented as appropriate.

CD, Crohn's disease; IBD, inflammatory bowel diseases; SMD, standardized mean difference; TNF, tumor necrosis factor; UC, ulcerative colitis.

^aCount of total number of preexisting conditions defined by the Centers for Disease Control as risk factors (Appendix 1).

patients compared with vedolizumab-treated patients, although patients in this study received only 1 vaccine dose (Pfizer-BioNTech BNT162b2 or Astra-Zeneca ChAdOx1). Edelman-Klapper et al⁹ prospectively followed a group of 185 IBD patients after 2 doses of BNT162b2

vaccine and found that although all patients on anti-TNF medication seroconverted, antibody levels were significantly lower and neutralizing and inhibitory functions were similarly lower in this patient group. These studies raise concern for reduced durability of vaccine efficacy.

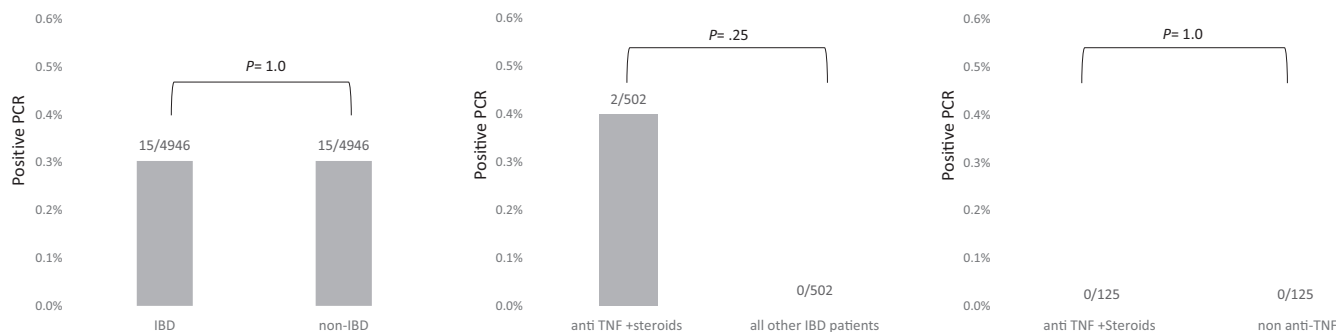


Figure 2. SARS-CoV-2 infection rate in (A) vaccinated IBD patients vs vaccinated non-IBD subjects; (B) vaccinated IBD patients treated with anti-TNF and/or corticosteroid vs all other IBD patients; and (C) vaccinated IBD patients treated with anti-TNF and/or corticosteroid vs other biologics.

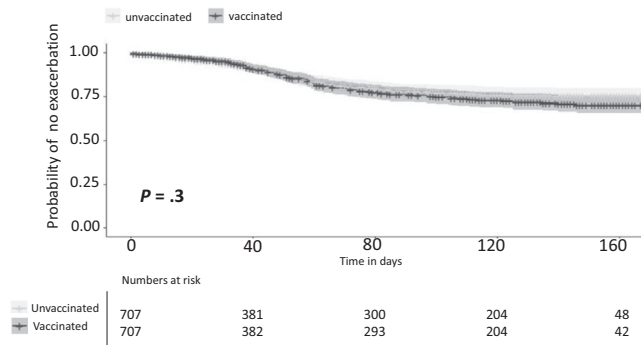


Figure 3. Time to exacerbation in vaccinated vs unvaccinated IBD patients matched for disease severity, number of pre-vaccine flares, and recentness of last flare.

Two recent serologic studies, the PREVENT-COVID study and the CORALE-IBD study, found that the large majority of IBD patients seroconverted, although levels in TNF-inhibitor patients were somewhat lower.^{10,11} Our findings support the notion that although post-vaccine antibody levels and function are both reduced in anti-TNF-treated patients, they are nonetheless sufficient to protect from infection for at least a 22-week median follow-up period.

Our findings support those of the two previous studies that addressed real-world COVID-19 vaccine

effectiveness for preventing infection in patients on anti-TNF medication; neither study found increased COVID-19 incidence in these patients. However, Hadi et al¹² did not specify length of follow-up, and Ben-Tov et al¹⁴ followed the cohort for a median of 10 weeks. In the current study, we have shown that vaccine effectiveness in IBD patients on TNF inhibitors and corticosteroids continues to be unimpaired for up to 22 weeks.

The strengths of our study include a large population-based cohort, as well as rigorous individual and propensity score matching to reduce the inevitable confounders inherent in retrospective research using observational data. Because COVID-19 prevalence fluctuated greatly during the study period, exact matching of vaccination date enabled the comparison of subject pairs during the same time period, with identical background COVID-19 prevalence. The large population of IBD patients who received the vaccine in a relatively short period enabled us to retain sufficient homogenous numbers for meaningful analyses even after stringent matching. Furthermore, all vaccinated individuals in the study received the same vaccine (BNT162b2), contributing to the uniformity of the comparison. Rigorous pre-vaccine disease adjustment allowed accurate detection of the vaccine effect on IBD activity and led to the likely conclusion that the vaccine is not associated with

Table 2. Basic Characteristics of Vaccinated and Unvaccinated IBD Patients in the Matched Cohort

	Non-vaccinated (n = 707)	Vaccinated (n = 707)	P value	SMD
Age (y)	31 ± 13.0	31 ± 13.0	1	<0.001
Sex, male	358 (50.6%)	358 (50.6%)	1	<0.001
Duration of follow-up after second vaccine (weeks)	14 (2.3–20.4)	14 (2.3–20.4)	1	<0.001
IBD type				
CD	485 (69%)	485 (69%)	1	1
UC	222 (31%)	222 (31%)	1	1
Disease duration (y)	8.6 (5.4–12)	8.6 (5.4–12)	1	<0.001
Treatment over last year				
Mesalamine	94 (13.3%)	114 (16.1%)	.154	0.080
Corticosteroid	23 (3.3%)	16 (2.3%)	.330	0.060
Immunomodulator	25 (3.5%)	35 (5.0%)	.235	0.070
Anti-TNF	95 (13.4%)	107 (15.1%)	.403	0.049
Vedolizumab	18 (2.5%)	30 (4.2%)	.106	0.094
Ustekinumab	8 (1.1%)	12 (1.7%)	.499	0.048
Tofacitinib	1 (0.1%)	2 (0.3%)	1.0	0.031
IBD hospitalization ever	271 (38.3%)	304 (43.0%)	.083	0.095
IBD surgery ever	65 (9.2%)	94 (13.3%)	.018	0.130
Corticosteroids therapy ever	350 (49.5%)	376 (53.2%)	.183	0.074
Disease activity group ^{a,b}			1	<0.001
1	76 (12%)	76 (12%)		
2	508 (83%)	508 (83%)		
3	32 (5.2%)	32 (5.2%)		

NOTE. Count (%), mean ± standard deviation, or medians (IQR) are presented as appropriate.

CD, Crohn’s disease; IBD, inflammatory bowel diseases; SMD, standardized mean difference; TNF, tumor necrosis factor; UC, ulcerative colitis.

^aDisease activity group calculated by hierarchical clustering of laboratory results (Supplementary Table 1, Appendix 3).

^b91 pairs had no laboratory results and could not be assigned to a disease activity group.

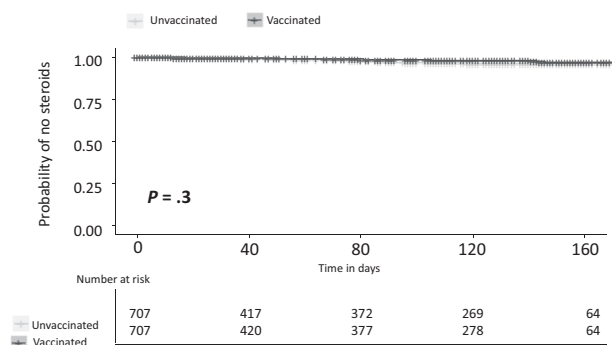


Figure 4. Time to steroid administration in vaccinated vs unvaccinated IBD patients matched for disease severity, number of pre-vaccine flares, and recentness of last flare.

increased IBD exacerbations. Finally, the follow-up period enabled better capture of SARS-CoV-2 infections.

The reason for our finding of higher COVID-19 incidence in unvaccinated IBD patients compared with unvaccinated individuals without IBD is not clear, though it should be noted that the IBD patients had a generally higher prevalence of a variety of underlying medical conditions than the non-IBD group among both unvaccinated as well as vaccinated individuals (Supplementary Table 2). This finding serves to increase certainty that the low infection rate in vaccinated IBD patients was not biased by a lower background rate and strengthens the significance of our finding that the vaccine protected IBD patients equally as well as those without IBD.

The main limitations of the study relate to its retrospective analysis of data obtained from an administrative database. It is possible that some hidden confounding variables were still not properly addressed and that some of the data were biased by misclassification. Nonetheless, case ascertainment of IBD in the epi-IIRN database is one of the most accurate globally, and registration of medications and COVID-19-related data are very accurate by virtue of the function of the Israeli health care system. The low infection rates in vaccinated subjects limit our statistical power to prove equivalent effectiveness, but the fact that the infection rate was so low in a very large cohort clearly shows that the vaccine was highly effective in both groups, including those on anti-TNF therapy.

Although the number of matched patients available for analysis was inevitably much lower than the number in the total cohort because of rigorous matching, comparison of the group that participated in the effectiveness analysis with the entire cohort revealed minimal differences in most demographic parameters (Supplementary Table 4).

In conclusion, we found that COVID-19 BNT162b2 vaccine was equally effective in IBD patients and in the non-IBD population, including those on TNF inhibitors and corticosteroids, and likely did not increase the risk of IBD exacerbation. The former finding supports previous

short-term follow-up data. The present study is the first large controlled study to address the latter conclusion using a broad definition of exacerbation and provides further reassurance regarding safety of the COVID-19 vaccine in IBD patients.

Supplementary Material

Note: To access the supplementary material accompanying this article, please click [here](#).

References

1. WHO COVID-19 Dashboard. Geneva: World Health Organization, 2020. Available at: <https://covid19.who.int/>. Accessed June 1, 2021.
2. Wiedermann U, Garner-Spitzer E, Wagner A. Primary vaccine failure to routine vaccines: why and what to do? *Hum Vaccin Immunother* 2016;12:239–243.
3. Papp KA, Haraoui B, Kumar D, et al. Vaccination guidelines for patients with immune-mediated disorders on immunosuppressive therapies. *J Cutan Med Surg* 2019;23:50–74.
4. Park SH, Yang SK, Park SK, et al. Efficacy of hepatitis A vaccination and factors impacting on seroconversion in patients with inflammatory bowel disease. *Inflamm Bowel Dis* 2014; 20:69–74.
5. Andrade P, Santos-Antunes J, Rodrigues S, et al. Treatment with infliximab or azathioprine negatively impact the efficacy of hepatitis B vaccine in inflammatory bowel disease patients. *J Gastroenterol Hepatol* 2015;30:1591–1595.
6. Hagihara Y, Ohfuji S, Watanabe K, et al. Infliximab and/or immunomodulators inhibit immune responses to trivalent influenza vaccination in adults with inflammatory bowel disease. *J Crohns Colitis* 2014;8:223–233.
7. Kennedy NA, Goodhand JR, Bewshea C, et al. Anti-SARS-CoV-2 antibody responses are attenuated in patients with IBD treated with infliximab. *Gut* 2021;70:865–875.
8. Kennedy NA, Lin S, Goodhand JR, et al. Infliximab is associated with attenuated immunogenicity to BNT162b2 and ChAdOx1 nCoV-19 SARS-CoV-2 vaccines in patients with IBD. *Gut* 2021. <https://doi.org/10.1136/gutjnl-2021-324789>.
9. Edelman-Klapper H, Zittan E, Bar-Gil Shitrit A, et al. Lower serologic response to COVID-19 mRNA vaccine in patients with inflammatory bowel diseases treated with anti-TNF α . *Gastroenterology* 2022;162:454–467.
10. Melmed GY, Botwin GJ, Sobhani K, et al. Antibody responses after SARS-CoV-2 mRNA vaccination in adults with inflammatory bowel disease. *Ann Intern Med* 2021. <https://doi.org/10.7326/M21-2483>.
11. Kappelman MD, Weaver KN, Boccieri M, et al. Humoral immune response to messenger RNA COVID-19 vaccines among patients with inflammatory bowel disease. *Gastroenterology* 2021; 161:1340–1343.e2.
12. Hadi YB, Thakkar S, Shah-Khan SM, et al. COVID-19 vaccination is safe and effective in patients with inflammatory bowel disease: analysis of a large multi-institutional research network in the United States. *Gastroenterology* 2021;161:1336–1339.e3.

13. Wong SY, Dixon R, Martinez Pazos V, et al. Serologic response to messenger RNA coronavirus disease 2019 vaccines in inflammatory bowel disease patients receiving biologic therapies. *Gastroenterology* 2021;161:715–718.e4.
14. Ben-Tov A, Banon T, Chodick G, et al. BNT162b2 messenger RNA COVID-19 vaccine effectiveness in patients with inflammatory bowel disease: preliminary real-world data during mass vaccination campaign. *Gastroenterology* 2021;161:1715–1717.e1.
15. Stulman MY, Asayag N, Focht G, et al. Epidemiology of inflammatory bowel diseases in Israel: a nationwide Epi-Israeli IBD Research Nucleus Study. *Inflamm Bowel Dis* 2021;27:1784–1794.
16. Friedman MY, Leventer-Roberts M, Rosenblum J, et al. Development and validation of novel algorithms to identify patients with inflammatory bowel diseases in Israel: an epi-IIRN group study. *Clin Epidemiol* 2018;10:671–681.
17. Israel Ministry of Health COVID-19 Dashboard. Available at: <https://datadashboard.health.gov.il/COVID-19/general>. Accessed June 10, 2021.
18. Borgan O. Multiple events per subject. In: Therneau TMGP, ed. *Modeling survival data: extending the cox model*. Berlin/Heidelberg, Germany: Springer-Verlag, 2000:169–229.
19. Dailey J, Kozhaya L, Dogan M, et al. Antibody responses to SARS-CoV-2 after infection or vaccination in children and young adults with inflammatory bowel disease. *Inflamm Bowel Dis* 2021. <https://doi.org/10.1093/ibd/izab207>.
20. Khan N, Mahmud N. Effectiveness of SARS-CoV-2 vaccination in a Veterans Affairs cohort of patients with inflammatory bowel disease with diverse exposure to immunosuppressive medications. *Gastroenterology* 2021;161:827–836.

CRediT Authorship Contributions

Raffi Lev-Tzion, MD (Conceptualization: Equal; Formal analysis: Equal; Methodology: Equal; Project administration: Equal; Writing – original draft: Lead; Writing – review & editing: Equal)

Gili Focht, MBA, MSc (Conceptualization: Equal; Formal analysis: Equal; Funding acquisition: Supporting; Methodology: Equal; Project administration: Equal; Supervision: Equal; Writing – original draft: Equal; Writing – review & editing: Equal)

Rona Lujan, MA (Conceptualization: Supporting; Data curation: Equal; Formal analysis: Equal; Methodology: Equal; Writing – original draft: Supporting; Writing – review & editing: Equal)

Adi Mendelovici, MSc (Conceptualization: Supporting; Data curation: Equal; Formal analysis: Equal; Methodology: Equal; Writing – review & editing: Equal)

Chagit Friss, BSc (Conceptualization: Supporting; Data curation: Equal; Formal analysis: Equal; Methodology: Equal; Writing – review & editing: Equal) Shira Greenfeld, MD (Conceptualization: Supporting; Data curation: Supporting; Writing – review & editing: Equal)

Revital Kariv, MD (Conceptualization: Supporting; Writing – review & editing: Equal)

Amir Ben-Tov, MD (Conceptualization: Supporting; Writing – review & editing: Equal)

Eran Matz, MD, MHA (Conceptualization: Supporting; Data curation: Supporting; Writing – review & editing: Equal)

Daniel Nevo, PhD (Conceptualization: Equal; Formal analysis: Supporting; Methodology: Equal; Writing – review & editing: Equal)

Yuval Barak-Corren, MD, MS (Formal analysis: Supporting; Writing – review & editing: Equal)

Iris Dotan, MD (Conceptualization: Supporting; Methodology: Equal; Writing – review & editing: Equal)

Dan Turner, MD, PhD (Conceptualization: Lead; Formal analysis: Supporting; Funding acquisition: Lead; Methodology: Equal; Project administration: Equal; Supervision: Lead; Writing – review & editing: Lead)

Conflicts of interest

These authors disclose the following: DT received consultation fee, research grant, royalties, or honorarium from Janssen, Pfizer, Ferring, AbbVie, Takeda, Atlantic Health, Shire, Celgene, Lilly, Roche, Thermo Fisher, BMS, Sorriso-Pharma, and Cytoreason. RK received consultation fee, research grant, royalties, or honorarium from Takeda and Pfizer. ID received consultation fee, research grant, royalties, or honorarium from Janssen, Pfizer, Ferring, AbbVie, Takeda, Celgene/BMS, Roche/Genentech Janssen, Arena, Neopharm, Gilead, Galapagos, Celltrion, Rafa Laboratories, Falk Pharma, MSD, Cambridge Healthcare, Sublimity, Nestle, Wild Biotech, Food Industries Organization, Integra Holdings, Abbott, Athos, Peer Voice, Medscape, Mediahuset, and GSK. The remaining authors disclose no conflicts.

Funding

The epiIIRN work is supported by an educational grant from The Leona M. and Harry B. Helmsley Charitable Trust.

Reprint requests

Address requests for reprints to: Raffi Lev-Tzion, MD, Juliet Keidan Institute of Pediatric Gastroenterology and Nutrition, Shaare Zedek Medical Center, P.O.B. 3235, Jerusalem 91031, Israel. e-mail: raffilv@szmc.org.il; fax: 972-2-6555756.

Appendix 1

Centers for Disease Control Preexisting Conditions Codes

Variable	Value	Definitions	Timing
Body mass index (kg/m^2)		Overweight: 2–29.9 Obese: 30–39.99 Severely obese: ≥ 40	Closest value to vaccine period taken in the past 5 years and not taken during pregnancy
Pregnancy	0/1		Pregnancy determined from February 2, 2020
Cancer	0/1	General ICD9 codes: 174, 175, 153, 154, 162, 188, 183, 182, 157, 191, 192, 151, 172, 201, 200, 202.4, 204, 205, 206, 207.1, 208.1, 189, 160, 161, 180, 140, 141, 142, 143, 144, 145, 150, 155, 156, 170, 171, 176, 184, 186, 187, 203, 152, 158, 159, 163, 164, 165, 190, 196, 197, 198, 199, "V10.5", "V10.6", "V10.1", "V10.4" Specific ICD9 codes: 233.0, "V10.3", 185, "V10.46", "V10.51", "V10.43", 179, "V10.42", "V10.85", "V10.04", "V10.82", "V10.52", 164.0, 195.0, "V10.21", "V10.22", "V10.41", "V10.03", "V10.07", "V10.81", 193, "V10.87", 273.3, 181, 192.8 Procedure ICD9 code: 85.4	In the past 5 years
Chronic kidney disease	0/1	General ICD9 codes: 585, 581, 582, 583, 588, 589 Specific ICD9 codes: 996.81, "V42.0", 403.01, 403.11, 403.21, 403.31, 403.41, 403.51, 403.61, 403.71, 403.81, 403.91, 404.02, 404.12, 404.22, 404.32, 404.42, 404.52, 404.62, 404.72, 404.82, 404.92, 404.03, 404.13, 404.23, 404.33, 404.43, 404.53, 404.63, 404.73, 404.83, 404.93, 586, 250.4, 274.1, 440.1, 587 Procedure ICD9 codes: 39.95, 54.98, 55.6	Ever
Chronic obstructive pulmonary disease	0/1	General ICD9 codes: 491, 492 Specific ICD9 codes: 496	Ever
Heart conditions	0/1	General ICD9 codes: 410, 411, 413, 414, 428, 425, 416 Specific ICD9 codes: 412, 413, 414, 429.2, 429.7, "V45.81", "V45.82", 398.91, 402.01, 402.11, 402.21, 402.31, 402.41, 402.51, 402.61, 402.71, 402.81, 402.91, 404.01, 404.11, 404.21, 404.31, 404.41, 404.51, 404.61, 404.71, 404.81, 404.91, 404.03, 404.13, 404.23, 404.33, 404.43, 404.53, 404.63, 404.73, 404.83, 404.93, 416.9, 514	Ever
Solid organ transplant	0/1	Specific ICD9 codes: 996.81, "V42.0", "V42.7", "V42.1", "V43.2", "V42.83", "V42.6" Procedure ICD9 codes: 55.6, 50.5, 37.5, 52.8, 33.5, 33.6	Ever
Sickle cell disease	0/1	Specific ICD9 code: 282.6	Ever
Type 1 diabetes	0/1	General ICD9 codes: 250.01, 250.11, 250.21, 250.31, 250.41, 250.51, 250.61, 250.71, 250.81, 250.91, 250.03, 250.13, 250.23, 250.33, 250.43, 250.53, 250.63, 250.73, 250.83, 250.93	Ever

.Continued

Variable	Value	Definitions	Timing
Type 2 diabetes	0/1	General ICD9 codes: 250 Specific ICD9 codes: 357.2, 362.0 Exclude ICD9 codes: 250.01, 250.11, 250.21, 250.31, 250.41, 250.51, 250.61, 250.71, 250.81, 250.91, 250.03, 250.13, 250.23, 250.33, 250.43, 250.53, 250.63, 250.73, 250.83, 250.93	Ever
Asthma	0/1	Specific ICD9 code: 493	Ever
Cerebrovascular disease	0/1	General ICD9 codes: 432, 433, 434, 435, 436, 438 Specific codes ICD9: 362.34, 430, 431	Ever
Other respiratory disease	0/1	General ICD9 codes: 494, 277.0 Specific ICD9 codes: 515	Ever
Hypertension	0/1	General ICD9 codes: 401, 402, 403, 404, 405	Ever
Immunocompromised state	0/1	General ICD9 codes: "042", "043", "044", "V42.8", "V42.8" Specific ICD9 codes: "795.71", "V08" Procedure ICD9 codes: 41.0	Ever
Neurologic conditions	0/1	General ICD9 codes: 290, 294, 331, 358, 345, 343, 334, 356, 335, 730.7, 331.3, 333, 334, 336, 335.1, 237.7, 742.81, 742.82 Specific ICD9 codes: 310.1, "332.0", 332.1, 340, 333.4, 138, "V12.02", 228.02, 307.23, 330.9, 331.4, 337, 335.1, "359.0", 359.21, "357.0", 742.81, 742.82	Ever
Liver disease	0/1	General ICD9 codes: 571, 572 Specific ICD9 codes: "070.22", "070.23", "070.32", "070.33", "070.44", "070.54", "V02.61", "V02.62", 275.1, 277.4, 452, "453.0", 571.8, 571.9	Ever
Thalassemia	0/1	General ICD9 code: "282.4"	Ever

ICD9, International Classification of Diseases, Ninth Revision.

Appendix 2

Method Used for Defining a Flare

Each one of the following counted as a flare for assessing disease outcomes in the IBD patients:

1. Escalation of IBD medical treatment
 - a. Any medication switch except for changes considered to be de-escalation (ie, change from biologics to immunomodulators or mesalamine and change from an immunomodulator to mesalamine) as well as change of one anti-TNF to another anti-TNF.
 - b. Combo therapy: defined as 60 days or more of both immunomodulator and biological treatment.
2. Commencement of corticosteroid (including budesonide) or enema.
3. Hospitalizations – all-cause hospitalizations: each billing record of hospitalization with a gap of more than 7 days to the next billing date was considered one hospitalization.

Appendix 3

Methods Used for Disease Severity Clustering

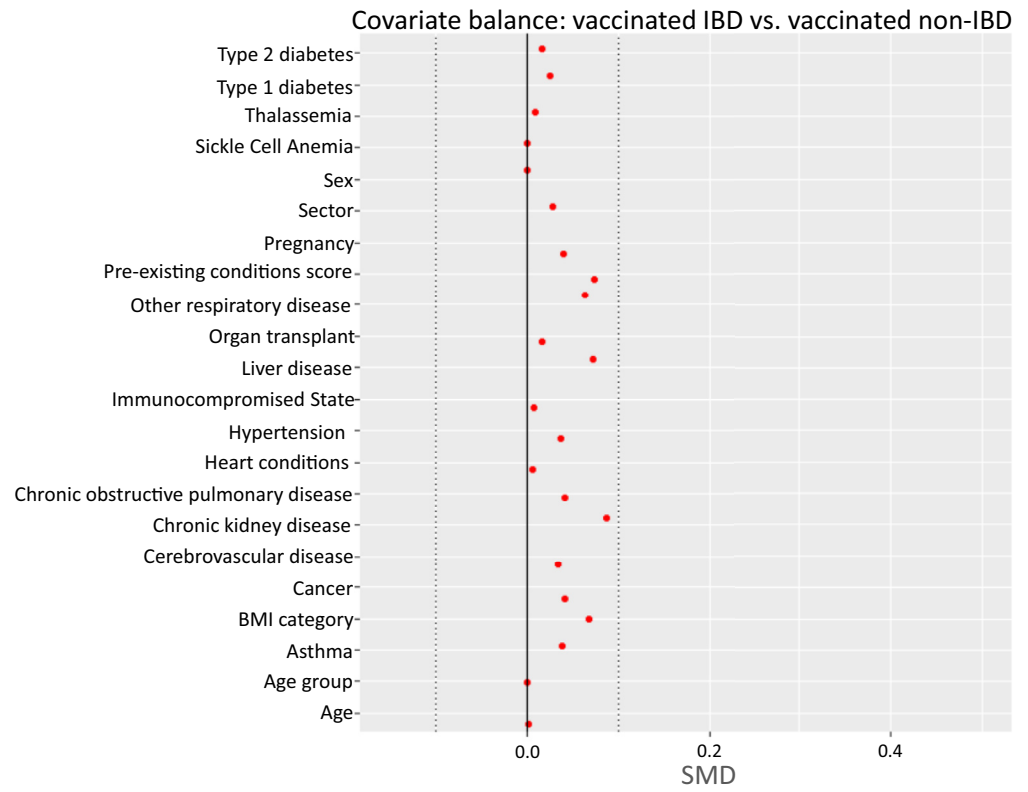
To create an indication of disease activity based on laboratory data that were collected as part of routine practice with a high percentage of missing data, agglomerative hierarchical clustering was used to categorize the IBD patients into disease severity groups based on the laboratory results closest to the vaccination date. Hierarchical clustering is an unsupervised statistical method for data exploration and partitioning into groups termed *clusters* where elements are grouped into a hierarchy of clusters according to their similarities.¹ An advantage of this method is that a patient could be categorized on the basis of at minimum one lab result. For example, if a patient has only a hemoglobin result value in the 2 years before the vaccine period, that patient will be included in the clustering process. Patients

without any laboratory results in the 2-year period before the vaccination period were excluded from the clustering analysis and termed "no known laboratory results" for the matching process. The clustering enabled another estimation of the patient's disease activity during the year before vaccination. Laboratory results included in the clustering analysis were C-reactive protein, erythrocyte sedimentation rate, platelets, hemoglobin, albumin, and white blood count and were standardized, as appropriate, by dividing the test result by the age and sex adjusted upper/lower normal limit.

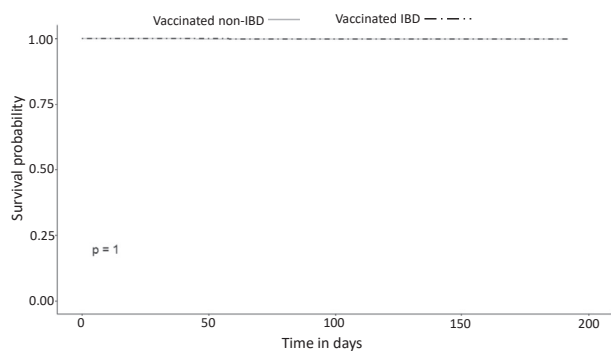
For hierarchical clustering, a dissimilarity matrix on the standardized variables with Gower's distance was computed in R package *cluster*.² The dissimilarity matrix measures whether objects can be clustered on the basis of how similar or distant they are.³ The *cluster* package was chosen to handle missing data, ie, NA characters.³ Next, agglomerative hierarchical clustering, a bottom-up process, was performed by using Ward's method, which was chosen because it produces clusters that minimize within-group variance⁴ and because it produced a large agglomerative coefficient (0.99) that describes the strength of the clustering structure. The optimal number of clusters, between 4 and 6, was chosen using the elbow method. The order of the clusters from mild to extreme disease activity was determined by observing the mean values of the laboratory results. Importantly, this method is purely descriptive, and no outcome data were used in the process; thus any statistical assessment of differences in outcomes between the clusters remains independent.

References

1. Galili T. Dendextend: an R package for visualizing, adjusting and comparing trees of hierarchical clustering. *Bioinformatics* 2015; 31:3718–3720.
2. Maechler M, Rousseeuw P, Struyf A, et al. Cluster: cluster analysis basics and extensions. R package version 2.1.2: for new features, see the 'Changelog' file (in the package source). 2021.
3. Struyf A, Hubert M, Rousseeuw P. Clustering in an object-oriented environment. *Journal of Statistical Software* 1997; 1:1–30.
4. Murtagh F, Legendre P. Ward's hierarchical agglomerative clustering method: which algorithms implement Ward's criterion? *Journal of Classification* 2014;31:274–295.

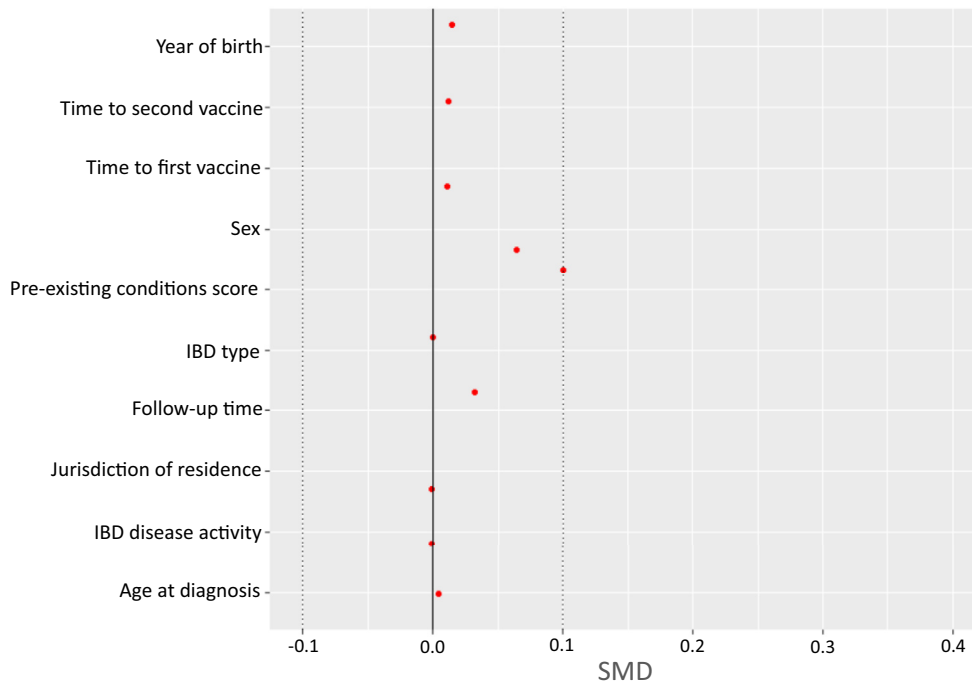


Supplementary Figure 1. Covariate balance for vaccinated IBD patients vs vaccinated non-IBD subjects. BMI, body mass index.

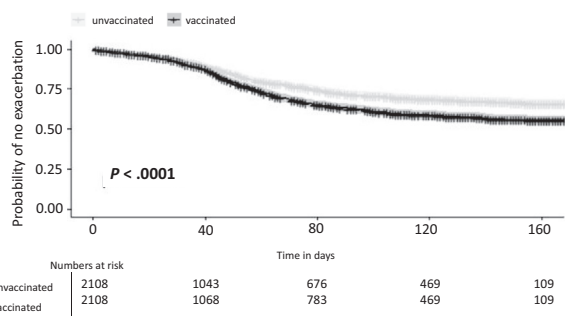


Supplementary Figure 2. Survival curves for time to first positive PCR for IBD vs non-IBD.

Covariate balance: vaccinated IBD on anti-TNF vs. other biologics



Supplementary Figure 3. Covariate balance for vaccinated IBD patients on anti-TNF vs other biologics.



Supplementary Figure 4. Time to exacerbation in vaccinated vs unvaccinated IBD patients matched for disease severity.

Supplementary Table 1. Hierarchical Clustering of Laboratory Results of All IBD Patients, Vaccinated and Unvaccinated

Laboratory test/disease activity group	1 (N =2908)	2 (N = 10,822)	3 (N = 2766)	4 (N = 557)	5 (N = 141)	6 (N = 3426)
CRP (mg/dL)	0.72 ± 1.38	0.74 ± 1.15	2.96 ± 3.5	8.8 ± 7.9	21.8 ± 14.1	—
Missing (%)	902 (31%)	1979 (18%)	518 (19%)	101 (18%)	16 (11%)	3426 (100%)
ESR (mm/h)	0.66 ± 0.53	0.8 ± 0.7	1.44 ± 1.03	1.76 ± 1.07	3.14 ± 2.09	—
Missing (%)	2055 (71%)	7378 (68%)	1758 (64%)	360 (65%)	80 (57%)	3426 (100%)
Platelets (10 ³ /μL)	0.54 ± 0.15	0.56 ± 0.12	0.7 ± 0.2	0.79 ± 0.33	0.95 ± 0.54	—
Missing (%)	31 (1%)	80 (0.7%)	12 (0.5%)	4 (0.7%)	3 (2.1%)	3426 (100%)
WBC (k/μL)	0.68 ± 0.19	0.65 ± 0.2	0.75 ± 0.3	0.81 ± 0.52	9.03 ± 67.1	—
Missing (%)	25 (0.9%)	73 (0.7%)	9 (0.3%)	3 (0.5%)	3 (2.1%)	3426 (100%)
Hemoglobin (g/dL)	1.18 ± 0.06	1.05 ± 0.065	0.95 ± 0.1	0.86 ± 0.13	0.8 ± 0.18	—
Missing (%)	25 (0.9%)	73 (0.7%)	9 (0.3%)	3 (0.5%)	3 (2.1%)	3426 (100%)
Albumin (g/dL)	1.26 ± 0.08	1.19 ± 0.07	1.09 ± 0.09	0.99 ± 0.14	0.9 ± 0.18	—
Missing (%)	314 (11%)	1740 (16%)	298 (11%)	36 (6.5%)	17 (12%)	3426 (100%)

NOTE. Disease activity is ranked from 1 to 5, 1 is mild and 5 is extreme, 6 is no known laboratory results in the 2 years before the vaccination. Count (%) or mean ± standard deviation are presented as appropriate.^a

CRP, C-reactive protein; ESR, erythrocyte sedimentation rate; WBC, white blood count.

^aValues were standardized, as appropriate, by dividing the test result by the age and sex adjusted upper/lower normal limit.

Supplementary Table 2. Basic Characteristics of Vaccinated Individuals With and Without IBD and Unvaccinated Individuals With and Without IBD in Unmatched Cohort

	Not vaccinated				Vaccinated			
	IBD (N = 4890)	Non-IBD (N = 23,356)	P value	SMD	IBD (N = 12,109)	Non-IBD (N = 31,427)	P value	SMD
Age (y)	52 ± 24	51 ± 23	<.001	0.054	48 ± 18	48 ± 17	.026	0.024
Age group (y)			<.001	0.155			<.001	0.066
<18	279 (5.7%)	990 (4.2%)			138 (1.1%)	298 (0.9%)		
18–39	1451 (30%)	7553 (32%)			4008 (33%)	10,499 (33%)		
40–49	838 (17%)	3723 (16%)			2262 (19%)	6400 (20%)		
50–59	626 (13%)	3140 (13%)			2165 (18%)	5811 (19%)		
60–69	426 (8.7%)	2609 (11%)			1737 (14%)	4207 (13%)		
70–79	430 (8.8%)	2216 (9.5%)			1263 (10%)	3016 (10%)		
80+	840 (17.2%)	3125 (13%)			536 (4.4%)	1196 (3.8%)		
Sex, male	2500 (51%)	12,256 (53%)	.088	0.027	6030 (50%)	15,372 (49%)	.1	0.018
Disease duration (y)	11 (5.7–17)	—			12 (6.1–18)	—		
Weeks from second vaccine	—	—			21 (18–23)	20 (17–22)	<.001	0.21
BMI category			<.001	0.409			<.001	0.502
Overweight (25–29.9 kg/m ²)	174 (3.6%)	253 (1.1%)			734 (6.1%)	736 (2.3%)		
Obese (30–39.99 kg/m ²)	196 (4.0%)	538 (2.3%)			930 (7.7%)	2096 (6.7%)		
Severe obesity (>40 kg/m ²)	67 (1.4%)	313 (1.3%)			330 (2.7%)	1184 (3.8%)		
Pregnancy	117 (2.4%)	438 (1.9%)	.02	0.036	199 (1.6%)	623 (2.0%)	.022	0.025
Treatment over last year								
Anti-TNF	0 (0%)	0 (0%)	1	<0.001	452 (3.7%)	0 (0%)	<.001	0.519
Corticosteroids	167 (3.4%)	0 (0%)	<.001	0.266	105 (0.9%)	0 (0%)	<.001	0.278
Immunomodulators	187 (3.8%)	0 (0%)	<.001	0.282	217 (1.8%)	0 (0%)	<.001	0.336
Mesalamine	553 (11%)	0 (0%)	<.001	0.505	738 (6.1%)	0 (0%)	<.001	0.386
Vedolizumab	88 (1.8%)	0 (0%)	<.001	0.191	122 (1.0%)	0 (0%)	<.001	0.292
Ustekinumab	55 (1.1%)	0 (0%)	<.001	0.151	76 (0.6%)	0 (0%)	<.001	0.213
Tofacitinib	11 (0.2%)	0 (0%)	<.001	0.067	9 (0.1%)	0 (0%)	<.001	0.096
IBD surgery ever	736 (15%)	0 (0%)	<.001	0.595	1689 (14%)	0 (0%)	<.001	0.569
IBD hospitalization ever	2668 (55%)	0 (0%)	<.001	1.55	5909 (49%)	0 (0%)	<.001	1.381
Corticosteroids use ever	2705 (55%)	0 (0%)	<.001	1.574	6922 (57%)	0 (0%)	<.001	1.634
Preexisting conditions score ^a			<.001	0.461			<.001	0.145
0	2053 (42%)	14988 (64%)			4922 (41%)	14,761 (47%)		
1	1142 (23%)	3584 (15%)			3412 (28%)	8545 (27%)		
2	571 (12%)	1712 (7.3%)			1664 (14%)	3756 (12%)		
3	367 (7.5%)	1180 (5.1%)			935 (7.7%)	2109 (6.7%)		
4+	757 (16%)	1892 (8.1%)			1176 (10%)	2256 (7.2%)		

Supplementary Table 2. Continued

	Not vaccinated				Vaccinated			
	IBD (N = 4890)	Non-IBD (N = 23,356)	P value	SMD	IBD (N = 12,109)	Non-IBD (N = 31,427)	P value	SMD
Preexisting conditions								
Cancer	250 (5.1%)	766 (3.3%)	<.001	0.092	582 (4.8%)	1201 (3.8%)	<.001	0.048
Chronic kidney disease	399 (8.2%)	942 (4%)	<.001	0.173	578 (4.8%)	922 (2.9%)	<.001	0.096
Chronic obstructive pulmonary disease	382 (7.8%)	854 (3.7%)	<.001	0.179	548 (4.5%)	1123 (3.6%)	<.001	0.048
Heart conditions	857 (18%)	2373 (10%)	<.001	0.214	1314 (11%)	2728 (8.7%)	<.001	0.073
Organ transplant	13 (0.3%)	24 (0.1%)	.008	0.038	29 (0.2%)	34 (0.1%)	.002	0.032
Sickle cell	0 (0%)	0 (0%)	1	<0.001	0 (0%)	0 (0%)	1	<0.001
Type II diabetes	705 (14%)	2461 (11%)	<.001	0.118	1641 (14%)	3954 (13%)	.007	0.029
Asthma	1038 (21%)	2385 (10%)	<.001	0.306	2717 (22%)	5474 (17%)	<.001	0.126
Cerebrovascular disease	527 (11%)	1446 (6.2%)	<.001	0.165	927 (7.7%)	1932 (6.1%)	<.001	0.06
Other respiratory disease	106 (2.2%)	126 (0.5%)	<.001	0.141	186 (1.5%)	279 (0.9%)	<.001	0.059
Hypertension	1427 (29%)	4573 (20%)	<.001	0.225	3234 (27%)	8315 (27%)	.606	0.006
Immunocompromised state	19 (0.4%)	59 (0.3%)	.134	0.024	40 (0.3%)	73 (0.2%)	.09	0.019
Type I diabetes	115 (2.4%)	371 (1.6%)	<.001	0.055	252 (2.1%)	540 (1.7%)	.012	0.027
Liver disease	513 (11%)	1188 (5.1%)	<.001	0.203	1634 (14%)	3309 (11%)	<.001	0.091
Thalassemia	48 (1.0%)	96 (0.4%)	<.001	0.069	108 (0.9%)	247 (0.8%)	.297	0.012

NOTE. Count (%), mean \pm standard deviation, or medians (IQR) are presented as appropriate.

BMI, body mass index.

^aNumber of preexisting conditions defined by the Centers for Disease Control as risk factors (Appendix 1).

Supplementary Table 3. Basic Characteristics of Vaccinated Individuals With and Without IBD and Unvaccinated Individuals With and Without IBD in Matched Cohort

	Not vaccinated		Vaccinated					
	IBD (N = 4694)	Non-IBD (N = 4694)	P value	SMD	IBD (N = 4946)	Non-IBD (N = 4946)	P value	SMD
Age (y)	52 ± 24	52 ± 24	.973	0.002	51 ± 16	51 ± 16)	.979	0.001
Age group (y)			1	<0.001			1	<0.001
<18	267 (5.7%)	267 (5.7%)			20 (0.4%)	20 (0.4%)		
18–39	1407 (30%)	1407 (30%)			1288 (26%)	1288 (26%)		
40–49	816 (17%)	816 (17%)			1015 (21%)	1015 (21%)		
50–59	603 (13%)	603 (13%)			1032 (21%)	1032 (21%)		
60–69	411 (8.8%)	411 (8.8%)			823 (17%)	823 (17%)		
70–79	416 (8.9%)	416 (8.9%)			627 (13%)	627 (13%)		
80+	774 (17%)	774 (17%)			141 (2.9%)	141 (2.9%)		
Sex, male	2414 (51%)	2414 (51%)	1	<0.001	2412 (49%)	2412 (49%)	1	<0.001
Disease duration (y)	11 (5.7–17)	—			12 (1–24)	—		
Weeks from second vaccine					22 (4–22)	22 (4–22)	1	<0.001
BMI category			<.001	0.215			.008	0.069
Overweight (25–29.9 kg/m ²)	163 (3.5%)	32 (0.7%)			69 (1.4%)	64 (1.3%)		
Obese (30–39.99 kg/m ²)	192 (4.1%)	137 (2.9%)			320 (6.5%)	340 (6.9%)		
Severe obesity (>40 kg/m ²)	67 (1.4%)	99 (2.1%)			143 (2.9%)	203 (4.1%)		
Pregnancy	122 (2.6%)	109 (2.3%)	.424	0.018	75 (1.5%)	59 (1.2%)	.069	0.039
Treatment over last year								
Anti-TNF	319 (6.8%)	0 (0%)	<.001	0.382	42 (0.8%)	0 (0%)	<.001	0.467
Corticosteroid	162 (3.5%)	0 (0%)	<.001	0.267	10 (0.2%)	0 (0%)	<.001	0.293
Immunomodulator	178 (3.8%)	0 (0%)	<.001	0.281	13 (0.3%)	0 (0%)	<.001	0.356
Mesalamine	537 (11%)	0 (0%)	<.001	0.508	90 (1.8%)	0 (0%)	<.001	0.91
Vedolizumab	86 (1.8%)	0 (0%)	<.001	0.193	11 (0.2%)	0 (0%)	<.001	0.28
Ustekinumab	55 (1.2%)	0 (0%)	<.001	0.154	8 (0.2%)	0 (0%)	<.001	0.2
Tofacitinib	10 (0.2%)	0 (0%)	.004	0.065	2 (0.0%)	0 (0%)	<.001	0.11
IBD surgery ever	705 (15%)	0 (0%)	<.001	0.595	668 (14%)	0 (0%)	<.001	1.33
IBD hospitalization ever	2540 (54%)	0 (0%)	<.001	1.536	2329 (47%)	0 (0%)	<.001	0.56
Corticosteroids use ever	2586 (55%)	0 (0%)	<.001	1.566	2722 (55%)	0 (0%)	<.001	1.57
Preexisting conditions score ^a			<.001	0.283			.011	0.073
0	1987 (42%)	2619 (56%)			2001 (41%)	2099 (42%)		
1	1106 (24%)	915 (20%)			1352 (27%)	1388 (28%)		
2	543 (12%)	433 (9.2%)			736 (15%)	696 (14%)		
3	344 (7.3%)	278 (5.9%)			404 (8.2%)	396 (8.0%)		
4+	714 (15%)	449 (10%)			453 (9.2%)	367 (7.4%)		

Supplementary Table 3. Continued

	Not vaccinated		Vaccinated				P value	SMD
	IBD (N = 4694)	Non-IBD (N = 4694)	P value	SMD	IBD (N = 4946)	Non-IBD (N = 4946)		
Preexisting conditions								
Cancer	247 (5.3%)	197 (4.2%)	.017	0.05	282 (5.7%)	236 (4.8%)	.042	0.042
Chronic kidney disease	376 (8.0%)	234 (5.0%)	<.001	0.123	228 (4.6%)	145 (2.9%)	<.001	0.088
Chronic obstructive pulmonary disease	358 (7.6%)	181 (3.9%)	<.001	0.163	220 (4.4%)	180 (3.6%)	.047	0.041
Heart conditions	805 (17%)	574 (12%)	<.001	0.139	520 (10.5%)	509 (10.3%)	.742	0.007
Organ transplant	13 (0.3%)	4 (0.1%)	.052	0.045	8 (0.2%)	5 (0.1%)	.579	0.017
Sickle cell	0 (0%)	0 (0%)	1	<0.001	0 (0%)	0 (0%)	1	<0.001
Type II diabetes	665 (14%)	597 (13%)	<.001	0.244	703 (14%)	732 (15%)	.424	0.017
Asthma	994 (21%)	571 (12%)	<.001	0.306	892 (18%)	820 (17%)	.059	0.038
Cerebrovascular disease	500 (11%)	320 (6.8%)	<.001	0.136	390 (7.9%)	346 (7.0%)	.099	0.034
Other respiratory disease	99 (2.1%)	23 (0.5%)	<.001	0.143	80 (1.6%)	45 (0.9%)	.002	0.063
Hypertension	1339 (29%)	1124 (24%)	<.001	0.104	1380 (28%)	1462 (30%)	.072	0.037
Immunocompromised state	19 (0.4%)	14 (0.3%)	.485	0.018	15 (0.3%)	13 (0.3%)	.85	0.008
Type I diabetes	107 (2.3%)	82 (1.7%)	.078	0.038	107 (2.2%)	89 (1.8%)	.22	0.026
Liver disease	492 (11%)	308 (6.6%)	<.001	0.141	726 (15%)	603 (12%)	<.001	0.073
Thalassemia	47 (1.0%)	25 (0.5%)	.013	0.054	42 (0.8%)	38 (0.8%)	.736	0.009

NOTE. Count (%), mean \pm standard deviation, or medians (IQR) are presented as appropriate.

BMI, body mass index.

^aCount of total number of preexisting conditions defined by the Centers for Disease Control as risk factors (Appendix 1).

Supplementary Table 4. Comparison of Matched IBD Patients Included in Effectiveness Analysis With Entire Unmatched Cohort

Demographic/vaccine variables	Entire cohort (not matched) (N = 12,105)	Included (matched) (N = 4946)	SMD
Sex			0.02
Male	6027 (49.8%)	2412 (48.8%)	
Female	6078 (50.2%)	2534 (51.2%)	
Year of birth	1972 (17.8)	1970 (16.1)	0.135
HMOs			0.544
HMO 2	9690 (80.0%)	4787 (96.8%)	
HMO 4	2274 (18.8%)	159 (3.2%)	
District			0.393
A	1396 (11.5%)	408 (8.2%)	
B	3696 (30.5%)	1907 (38.6%)	
C	1036 (8.6%)	191 (3.9%)	
D	1329 (11.0%)	429 (8.7%)	
E	437 (3.6%)	55 (1.1%)	
F	613 (5.1%)	86 (1.7%)	
G	3598 (29.7%)	1870 (37.8%)	
Time to first vaccine	38.0 (30–64)	36.0 (29–59)	0.208
Time between vaccine doses	3.00 (3.00–3.00)	3.00 (3.00–3.00)	0.234

NOTE. Count (%), mean \pm standard deviation, or medians (IQR) are presented as appropriate.